

Door and Jamb Preparation for Schlage Hardware



LOCK SERIES INDEX OF TEMPLATE SHEETS

AL-Series Locks		Door			Template Number	
Function	Description	Door Edge Flat	Door Edge Bev.	Door Thickness	Wood or Composite	Metal
AL10S thru AL85PD	1" (25mm) Faceplate (standard with 2 ³ / ₈ " (60mm) backset)	x	x	1 ³ / ₈ " - 1 ⁷ / ₈ " (35mm-48mm)	AL890	AL891
	1" (25mm) Faceplate, 1/4" (6mm) radius round corner	x	x	1 ³ / ₈ " - 1 ⁷ / ₈ " (35mm-48mm)	AL892	
	1" (25mm) Faceplate, circular drive-in	x		1 ³ / ₈ " - 1 ⁷ / ₈ " (35mm-48mm)	AL893	
	1" (25mm) Faceplate, 1/2" (13mm) rabbeted, strike included	x		1 ³ / ₈ " - 1 ⁷ / ₈ " (35mm-48mm)	AL895	
	1 ¹ / ₈ " (29mm) Faceplate, (std. w/ 2 ³ / ₄ " (70mm) backsets)	x	x	1 ³ / ₈ " - 1 ⁷ / ₈ " (35mm-48mm)	AL888	AL889
	1 ¹ / ₈ " (29mm) Faceplate, 1/2" (13mm) rabbeted, strike included	x		1 ³ / ₈ " - 1 ⁷ / ₈ " (35mm-48mm)	AL894	
AL170	Dummy trim, thru bolt mounted			1 ³ / ₈ " - 1 ⁷ / ₈ " (35mm-48mm)	AL896	AL897

Note:

Whenever backset options are listed at the bottom of a template sheet, backset must be indicated by the suffix letter as follows:

A = 1³/₄" (44mm) backset B = 2" (51mm) backset C = 2³/₈" (60mm) backset D = 2³/₄" (70mm) backset

E = 3³/₄" (95mm) backset F = 5" (127mm) backset G = Other (specify)

Example: AL888-D (AL-Series lock template #888 with 2³/₄" (70mm) backset)

AL-Series Standard Strike		Jamb	
Number	Description	Template Number	
		Wood	Metal
10-025	ANSI A115 standard for 1 ³ / ₄ " (44mm) doors	J918	J919

Note:

See strike template index for optional strikes.

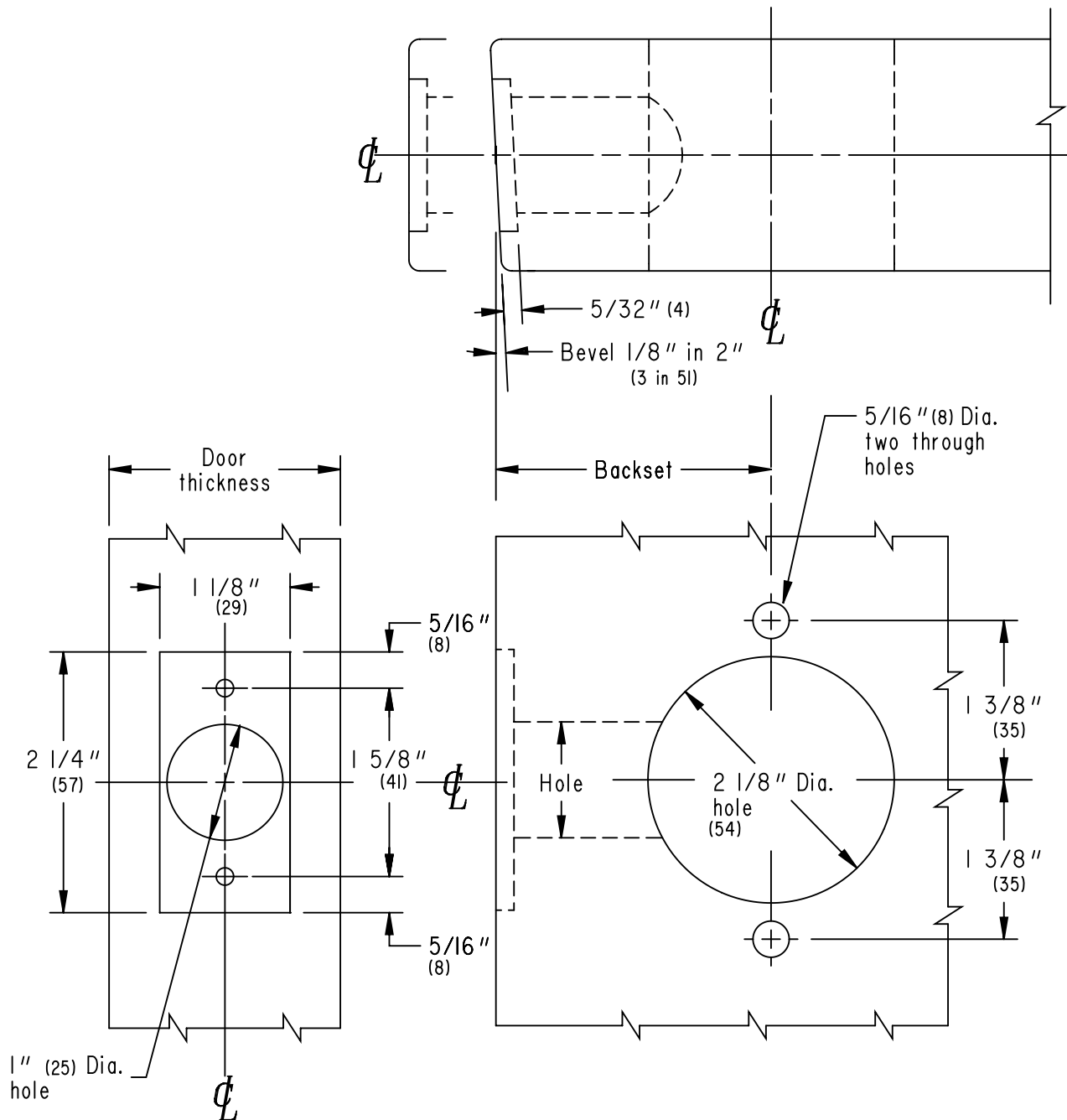
AL10S
thru
AL85PD

1 3/8" (35) to 1 7/8" (48) wood doors only
1 7/8" (29) faceplate, flat or beveled

Note: Dimensions shown in parenthesis () are in millimeters.

SCHLAGE®

AL-Series



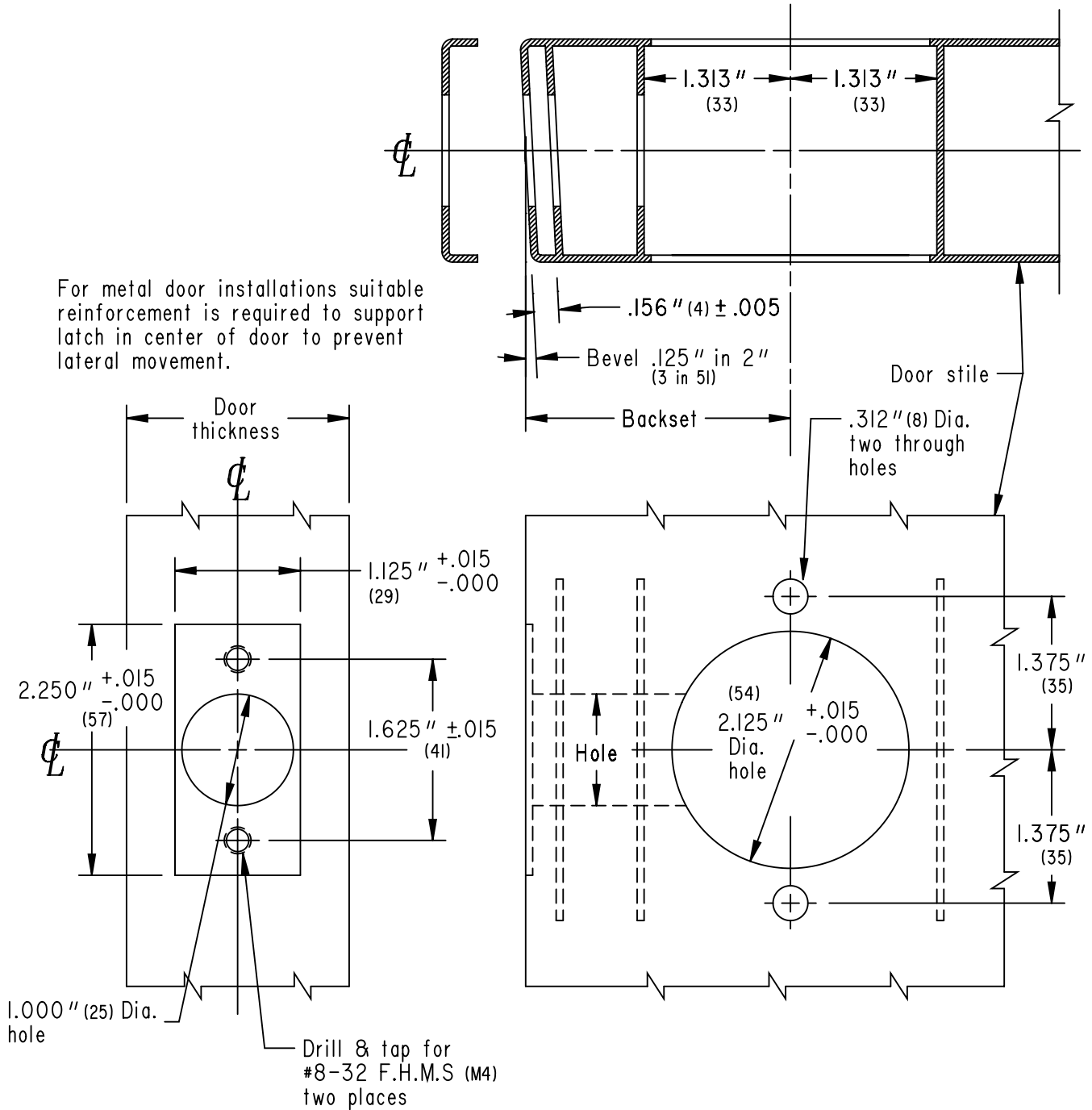
<p>BACKSETS</p> <p>AL888-C, 2 3/8" (60) AL888-F, 5" (127)</p> <p>AL888-D, 2 3/4" (70) AL888-G, other</p> <p>AL888-E, 3 3/4" (95)</p>	<p>JOB _____</p> <p>DATE _____ DOOR THICKNESS _____</p> <p>REMARKS _____</p>	<p>TEMPLATE NO.</p> <p>AL888</p>
---	--	---

AL10S
thru
AL85PD

1³/₈" (35) to 1⁷/₈" (48) metal doors only
1¹/₈" (29) faceplate, flat or beveled
Note: Dimensions shown in parenthesis () are in millimeters.

SCHLAGE®

AL-Series



<p>TEMPLATE NO.</p> <p>AL889</p>	<p>JOB _____</p> <p>DATE _____ DOOR THICKNESS _____</p> <p>REMARKS _____</p>	<p>BACKSETS</p> <p>AL889-C, 2³/₈" (60) AL889-F, 5" (127)</p> <p>AL889-D, 2³/₄" (70) AL889-G, other</p> <p>AL889-E, 3³/₄" (95)</p>
---	--	--

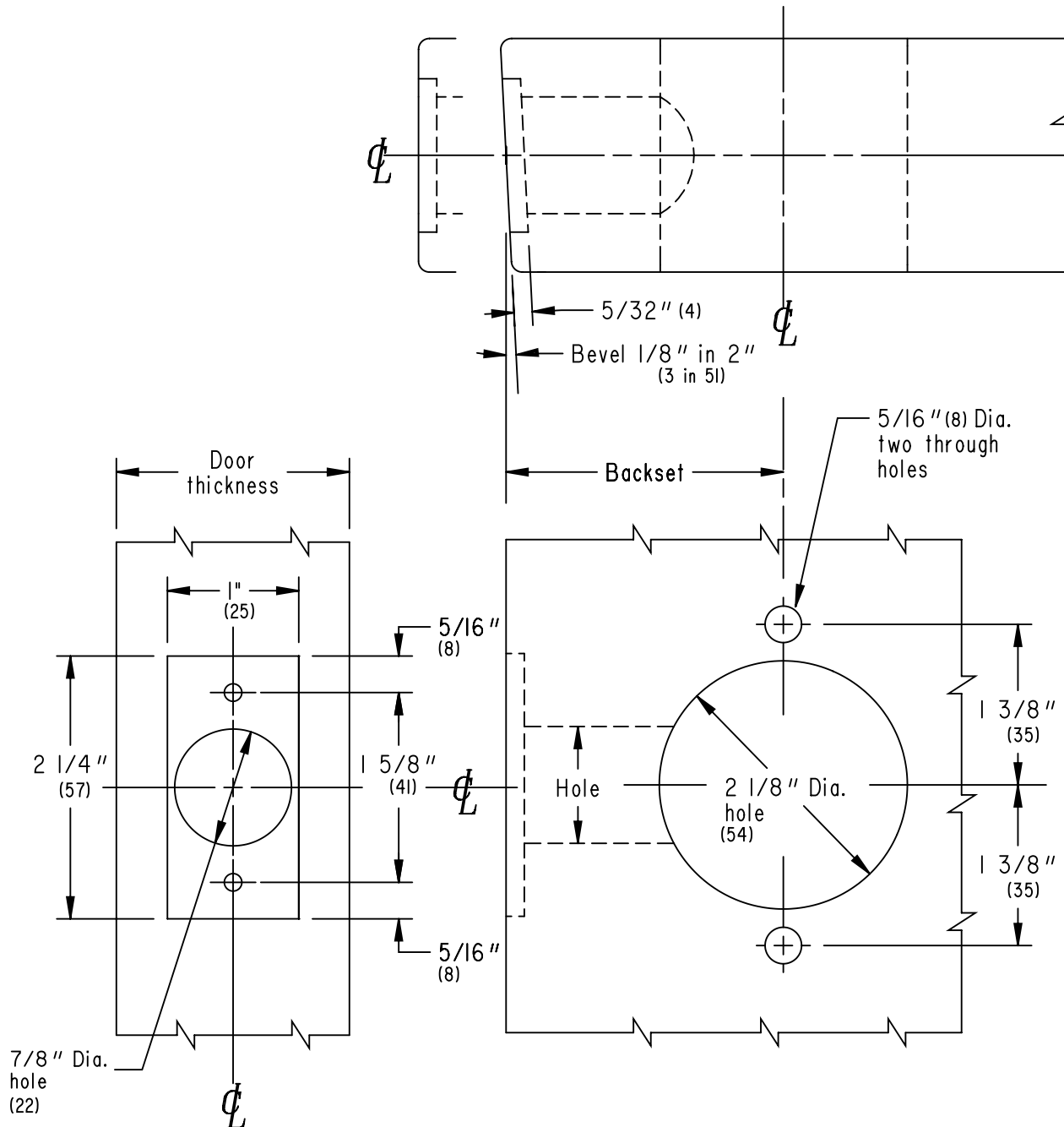
AL10S
thru
AL85PD

1³/₈" (35) to 1⁷/₈" (48) wood or composite doors
1" (25) faceplate, flat or beveled

Note: Dimensions shown in parenthesis () are in millimeters.

SCHLAGE®

AL-Series



<p>BACKSETS</p> <p>AL890-C, 2³/₈" (60) AL890-F, 5" (127)</p> <p>AL890-D, 2³/₄" (70) AL890-G, other</p> <p>AL890-E, 3³/₄" (95)</p>	<p>JOB _____</p> <p>DATE _____ DOOR THICKNESS _____</p> <p>REMARKS _____</p>	<p>TEMPLATE NO.</p> <p>AL890</p>
--	--	---

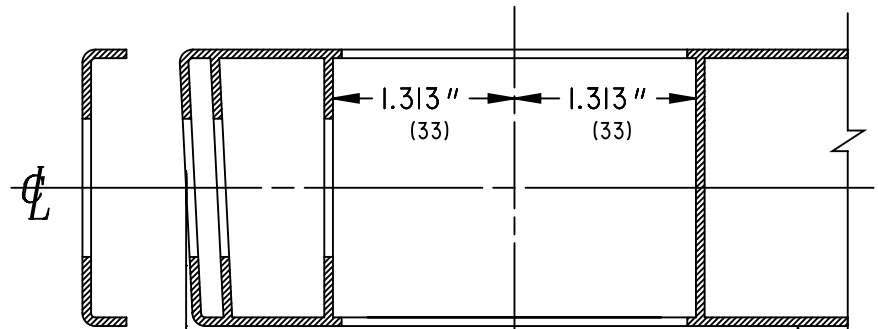
AL10S
thru
AL85PD

1 3/8" (35) to 1 7/8" (48) metal doors only
1" (25) faceplate, flat or beveled

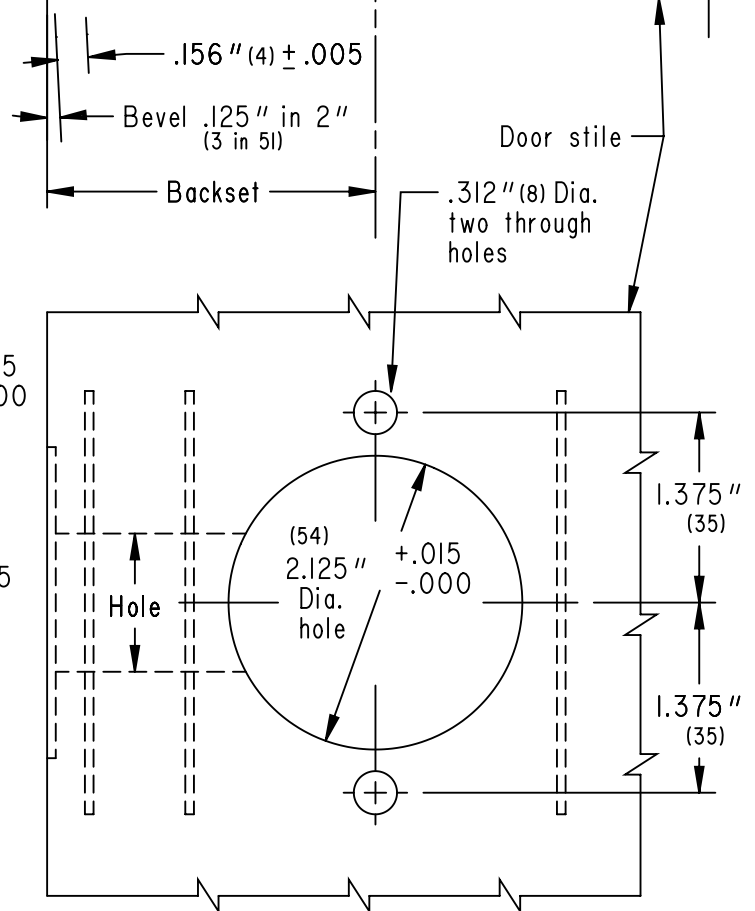
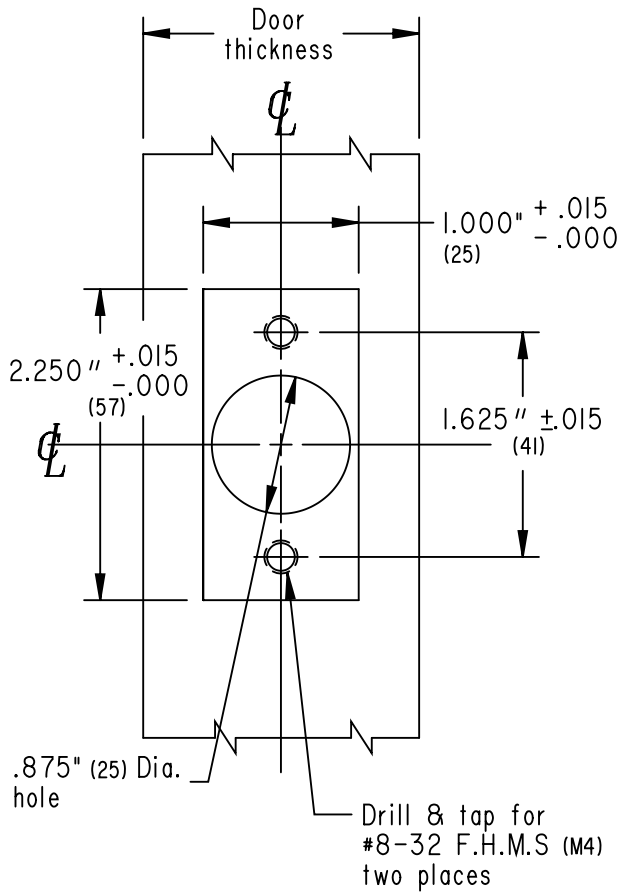
Note: Dimensions shown in parenthesis () are in millimeters.

SCHLAGE®

AL-Series



For metal door installations suitable reinforcement is required to support latch in center of door to prevent lateral movement.



TEMPLATE NO. AL891	JOB _____ DATE _____ DOOR THICKNESS _____ REMARKS _____	BACKSETS AL891-C, 2 3/8" (60) AL891-F, 5" (127) AL891-D, 2 3/4" (70) AL891-G, other AL891-E, 3 3/4" (95)
------------------------------	---	--

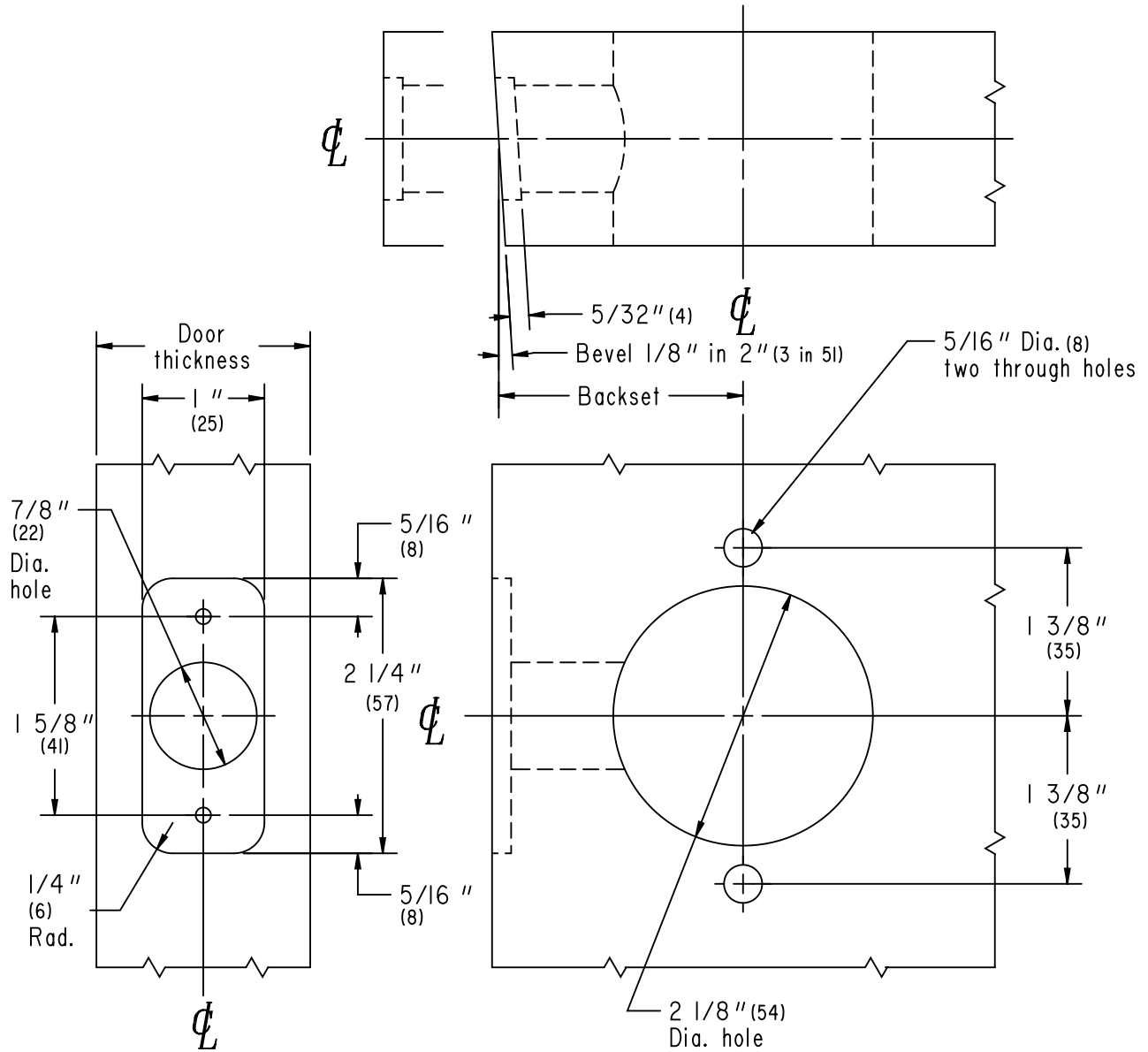
AL10S
 thru
AL85PD

1³/₈" (35) to 1⁷/₈" (48) wood or composite doors
 1" (25) faceplate, flat or beveled, 1/4" (6) radius corner

Note: Dimensions shown in parenthesis () are in millimeters.

SCHLAGE®

AL-Series



<p>BACKSETS</p> <p>AL892-C, 2³/₈" (60) AL892-F, 5" (127)</p> <p>AL892-D, 2³/₄" (70) AL892-G, other</p> <p>AL892-E, 3³/₄" (95)</p>	<p>JOB _____</p> <p>DATE _____ DOOR THICKNESS _____</p> <p>REMARKS _____</p>	<p>TEMPLATE NO.</p> <p>AL892</p>
--	--	---

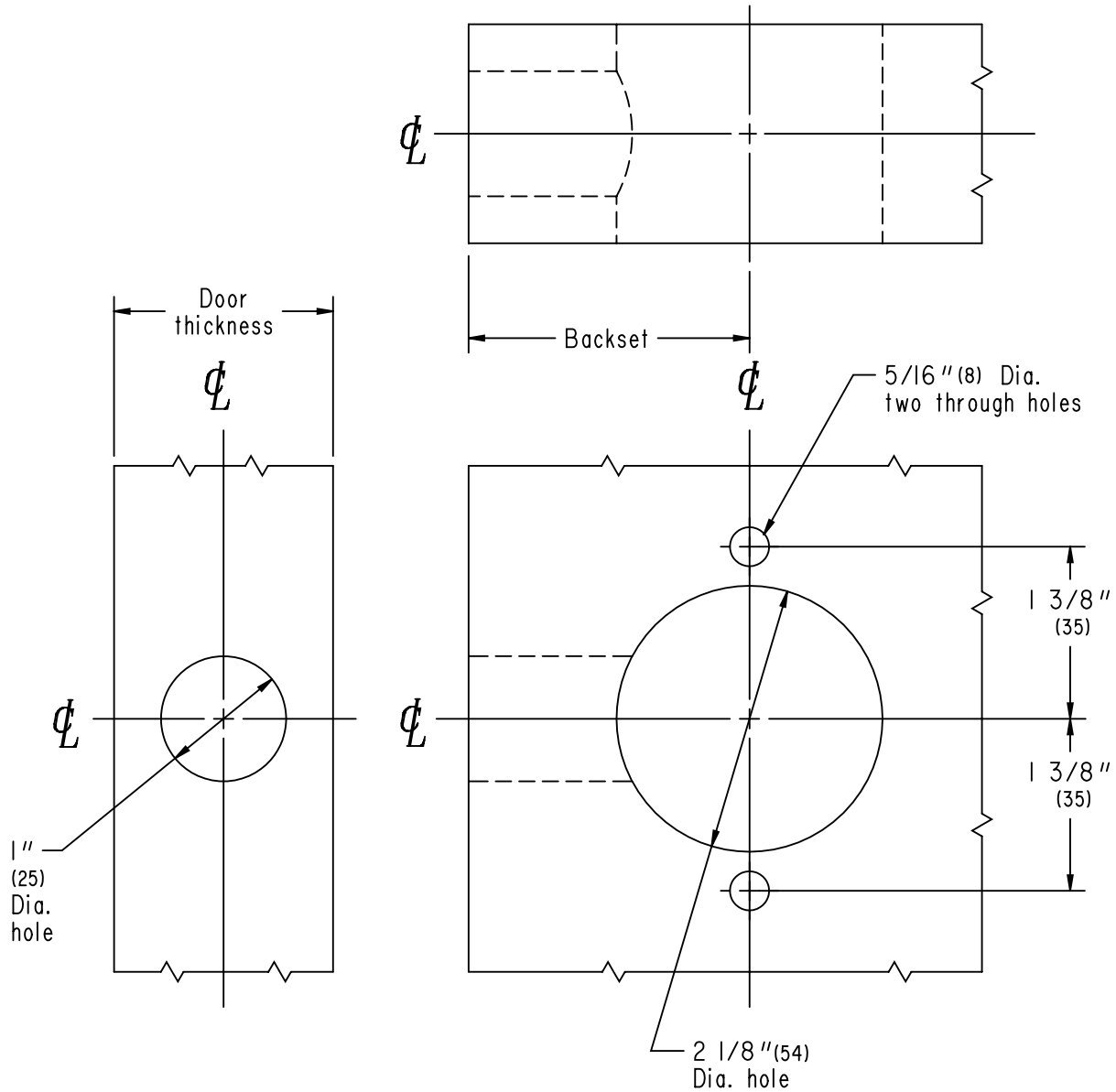
AL10S
 thru
AL85PD

1³/₈" (35) to 1⁷/₈" (48) wood or composite doors
 1" (25) circular faceplate, flat, drive-in latch

Note: Dimensions shown in parenthesis () are in millimeters.

SCHLAGE®

AL-Series



<p>TEMPLATE NO. AL893</p>	<p>JOB _____ DATE _____ DOOR THICKNESS _____ REMARKS _____</p>	<p>BACKSETS AL893-C, 2³/₈" (60) AL893-D, 2³/₄" (70) AL893-G, other</p>
---------------------------------------	--	--

AL10S
thru
AL85PD

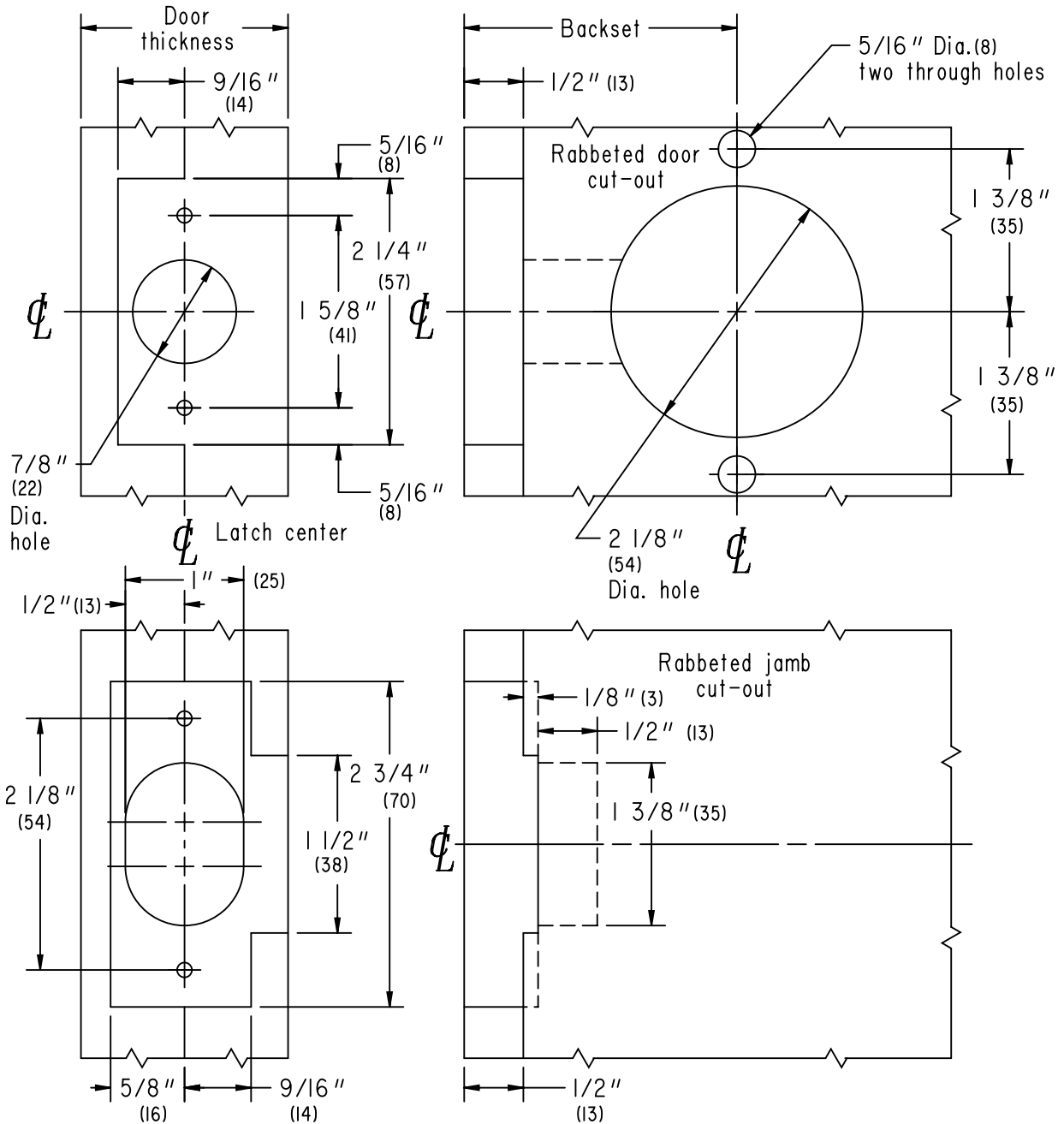
1³/₈" (35) to 1⁷/₈" (48) wood or composite doors

1¹/₈" (29) flat, 1/2" (13) rabbeted faceplate and strike

Note: Dimensions shown in parenthesis () are in millimeters.

SCHLAGE®

AL-Series



BACKSETS

AL894-C, 2³/₈" (60) AL894-F, 5" (127)
AL894-D, 2³/₄" (70) AL894-G, other
AL894-E, 3³/₄" (95)

JOB _____

DATE _____ DOOR THICKNESS _____

REMARKS _____

TEMPLATE NO.

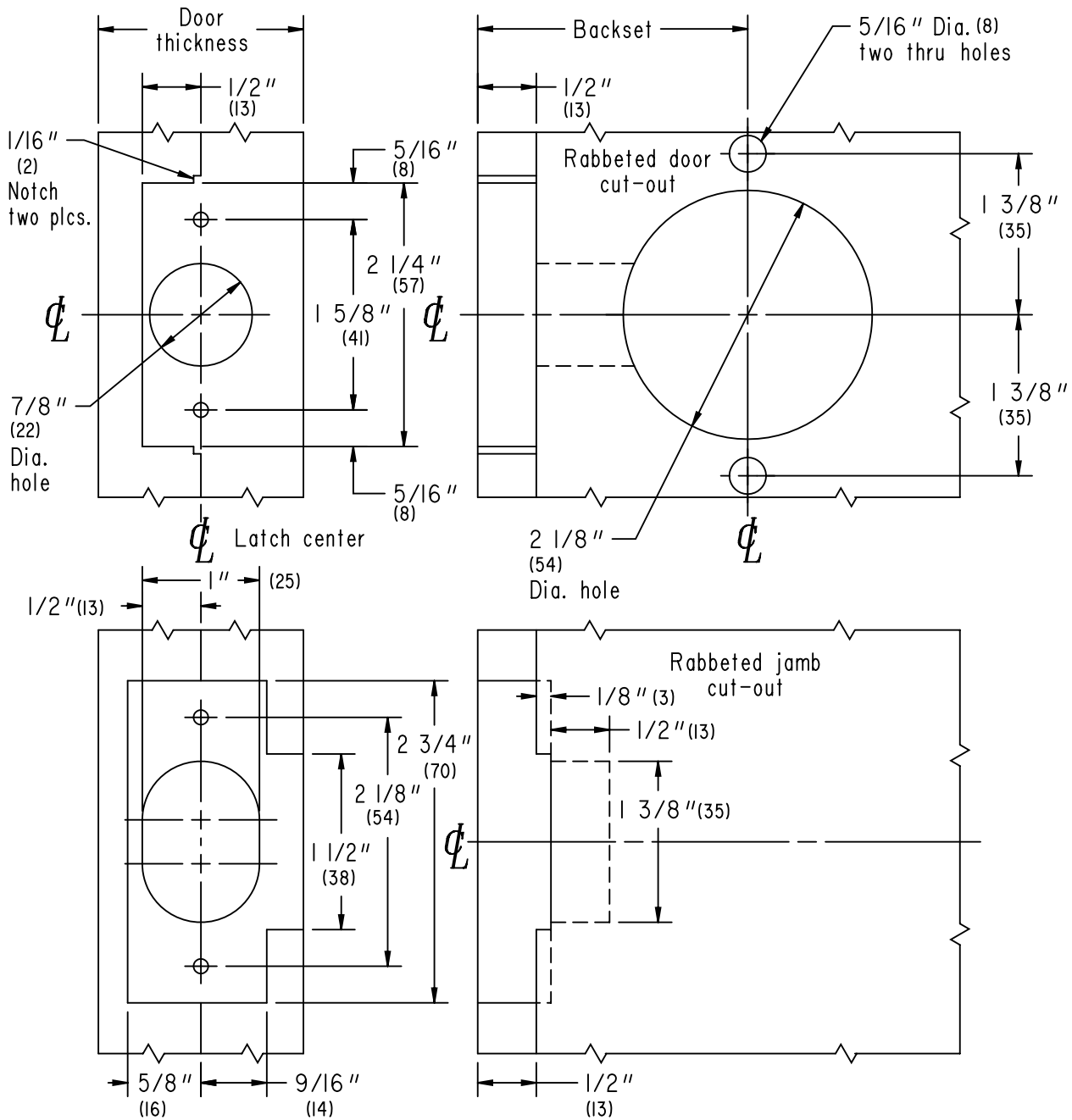
AL894

AL10S
thru
AL85PD

1 3/8" (35) to 1 7/8" (48) wood or composite doors
1" (25) flat, 1/2" (13) rabbeted faceplate and strike
Note: Dimensions shown in parenthesis () are in millimeters.

SCHLAGE®

AL-Series



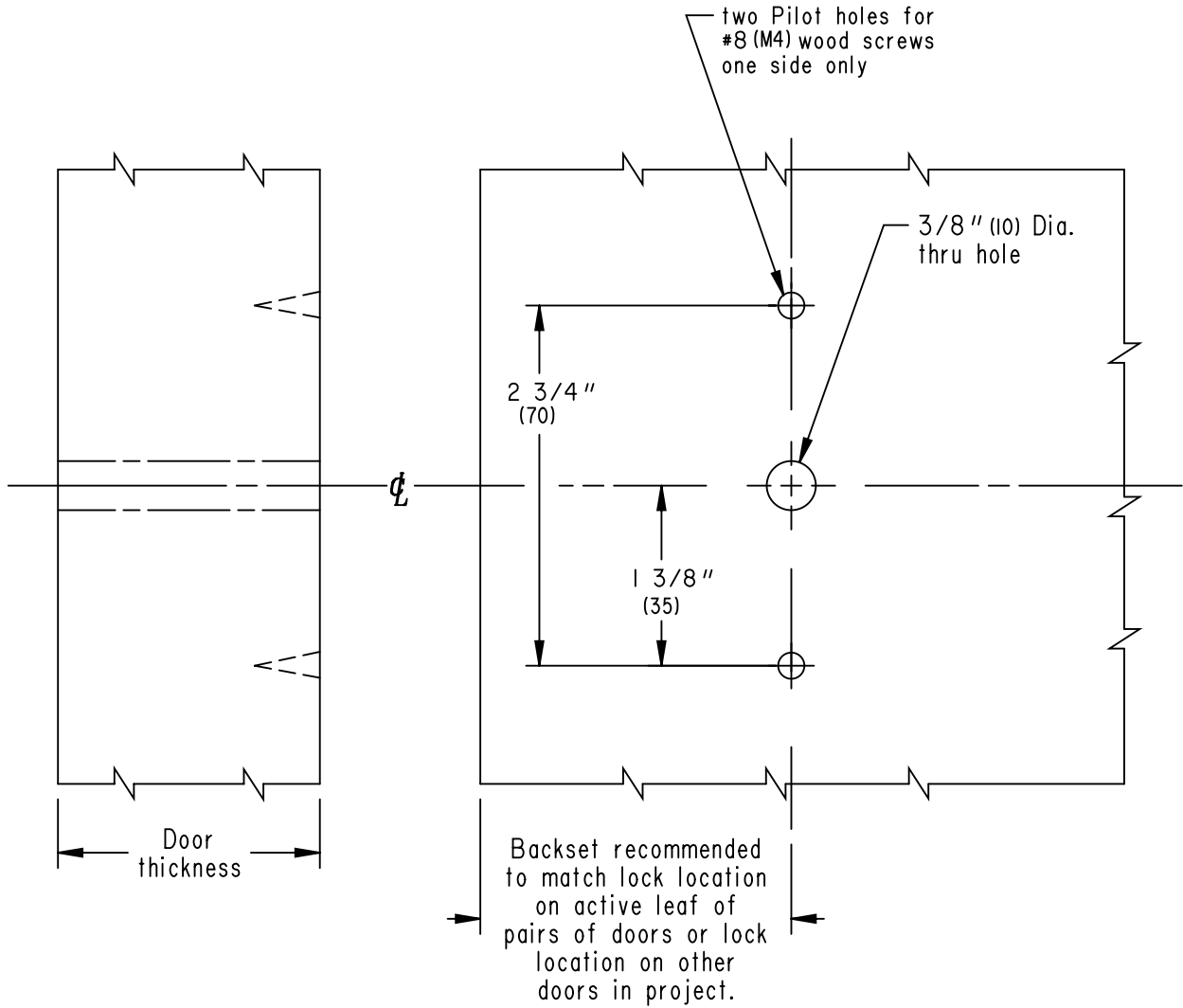
<p>TEMPLATE NO. AL895</p>	<p>JOB _____ DATE _____ DOOR THICKNESS _____ REMARKS _____</p>	<p>BACKSETS AL895-C, 2 3/8" (60) AL895-F, 5" (127) AL895-D, 2 3/4" (70) AL895-G, other AL895-E, 3 3/4" (95)</p>
--------------------------------------	--	--

**AL170
D170**

1 3/8" (35) to 2" (51) wood or composite doors
Thru bolt mounted
Heavy duty lever designs only

Note: Dimensions shown in parenthesis () are in millimeters.

SCHLAGE®
AL-Series
D-Series
Dummy Trim



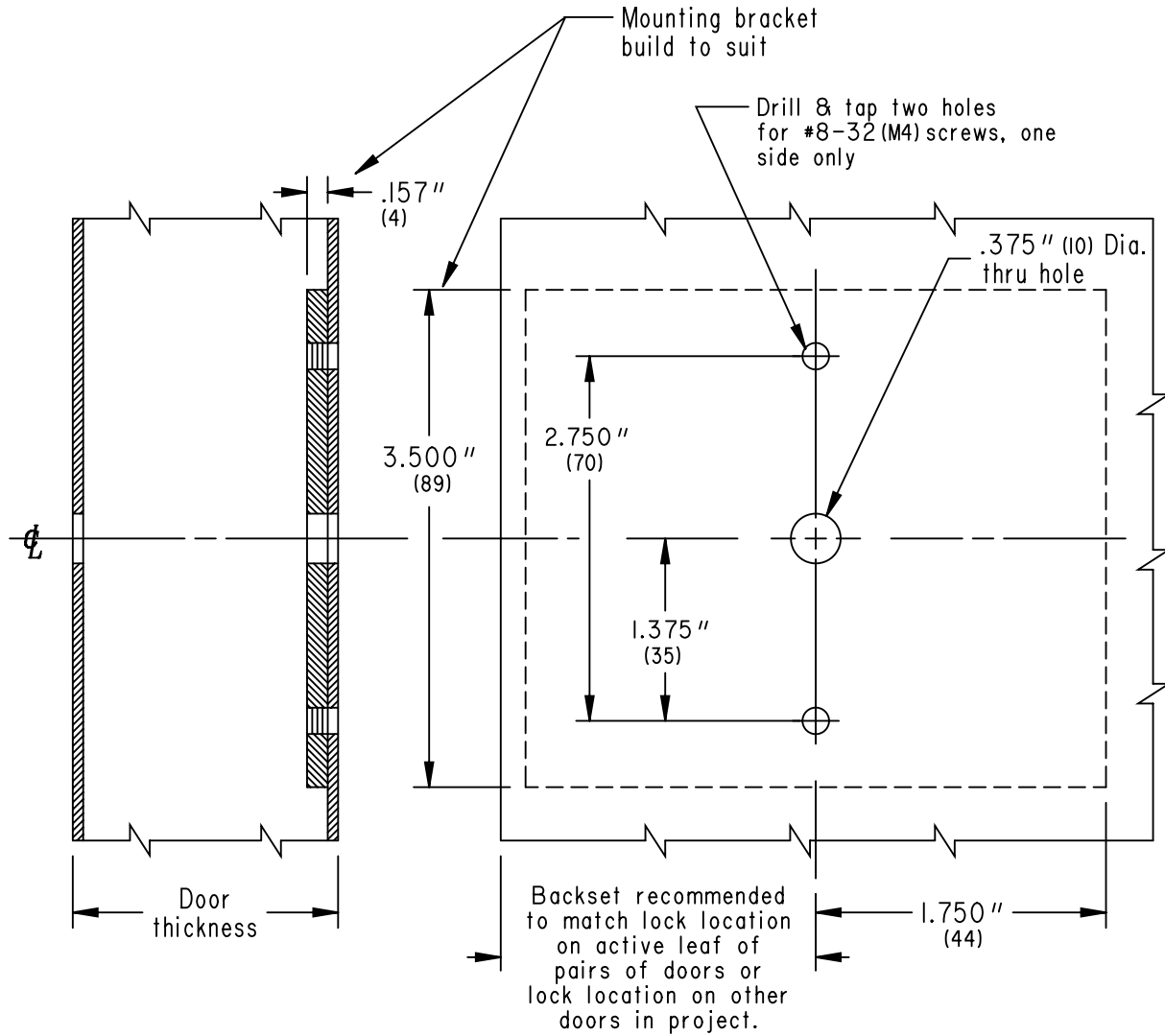
BACKSETS Any Backsets	JOB _____ DATE _____ DOOR THICKNESS _____ REMARKS _____	TEMPLATE NO. AL896
---------------------------------	---	------------------------------

AL170
D170

1 3/8" (35) to 2" (51) metal doors
Thru bolt mounted
Heavy duty lever designs only

Note: Dimensions shown in parenthesis () are in millimeters.

SCHLAGE
AL-Series
D-Series
Dummy Trim



TEMPLATE NO. AL897	JOB _____ DATE _____ DOOR THICKNESS _____ REMARKS _____	BACKSETS Any backset
------------------------------	---	-------------------------