



# Door and Jamb Preparation for Schlage Hardware

LOCK SERIES INDEX OF TEMPLATE SHEETS

CL-Series Cabinet and Drawer Locks		Door			Template Number	
Function	Description	Door Edge Flat	Door Edge Bev.	Door Thickness	Wood or Composite	Metal
CL1000	Cabinet door lock, surface mounted			$\frac{7}{8}'' - 1\frac{3}{8}''$ (22mm-35mm)	CL886	CL886
CL2000	Cabinet drawer lock, surface mounted			$\frac{7}{8}'' - 1\frac{3}{8}''$ (22mm-35mm)	CL886	CL886

CL-Series Strikes				Template Number	
Function	Description	Wood	Metal		
CL10-352	Cabinet lock, slotted strike	CL887	CL887		
CL10-354	Cabinet lock, bar, $\frac{1}{4}''$ (6mm)	CL887	CL887		
CL10-355	Cabinet lock, bar, $\frac{1}{2}''$ (13mm)	CL887	CL887		

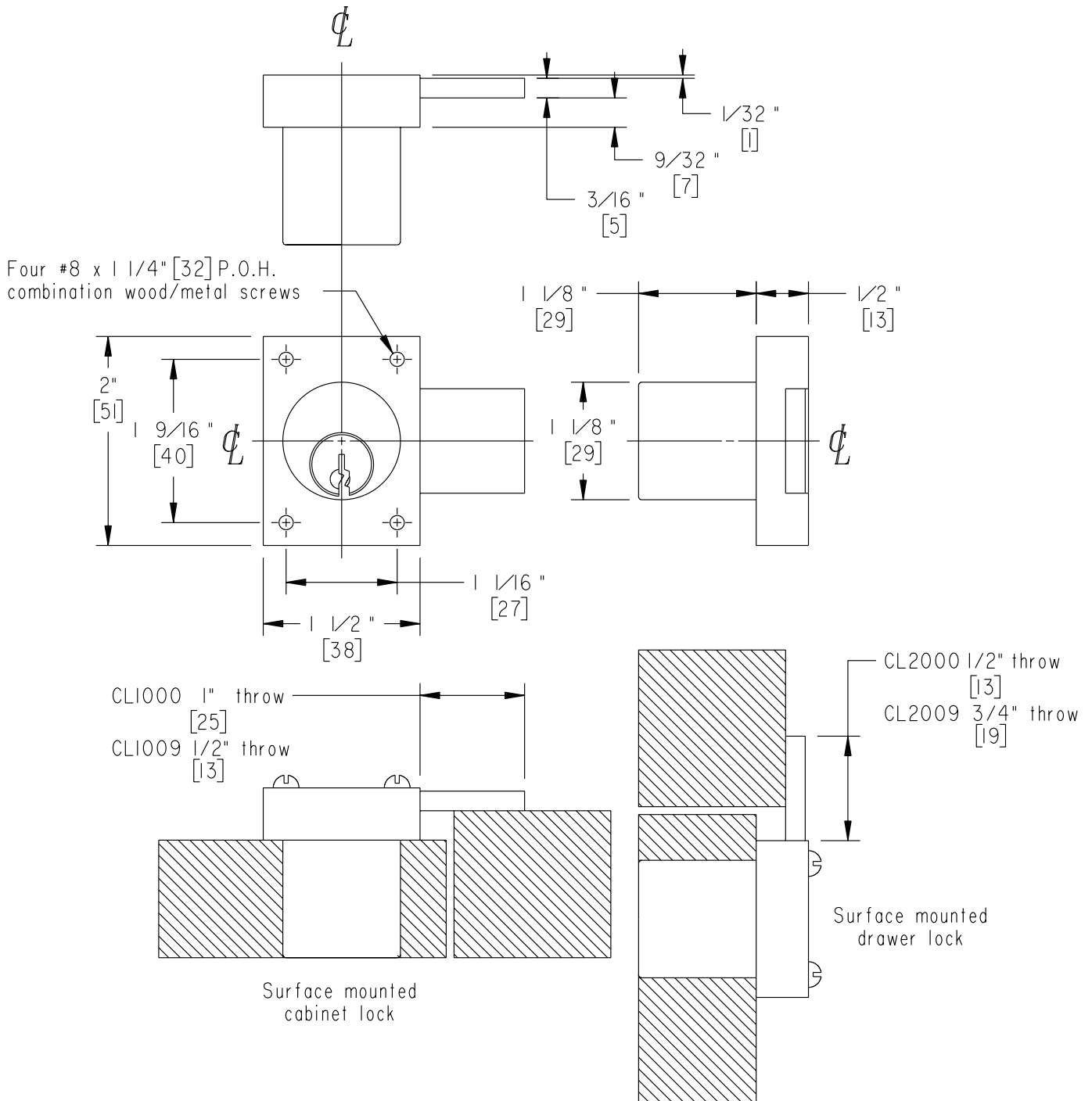
**CL1000  
CL2000**

**7/8" [22] to 1 3/8" [35] wood, composite or metal doors**

**SCHLAGE®**

**Note:** Dimensions shown in brackets [ ] are in millimeters.

**CL-Series**

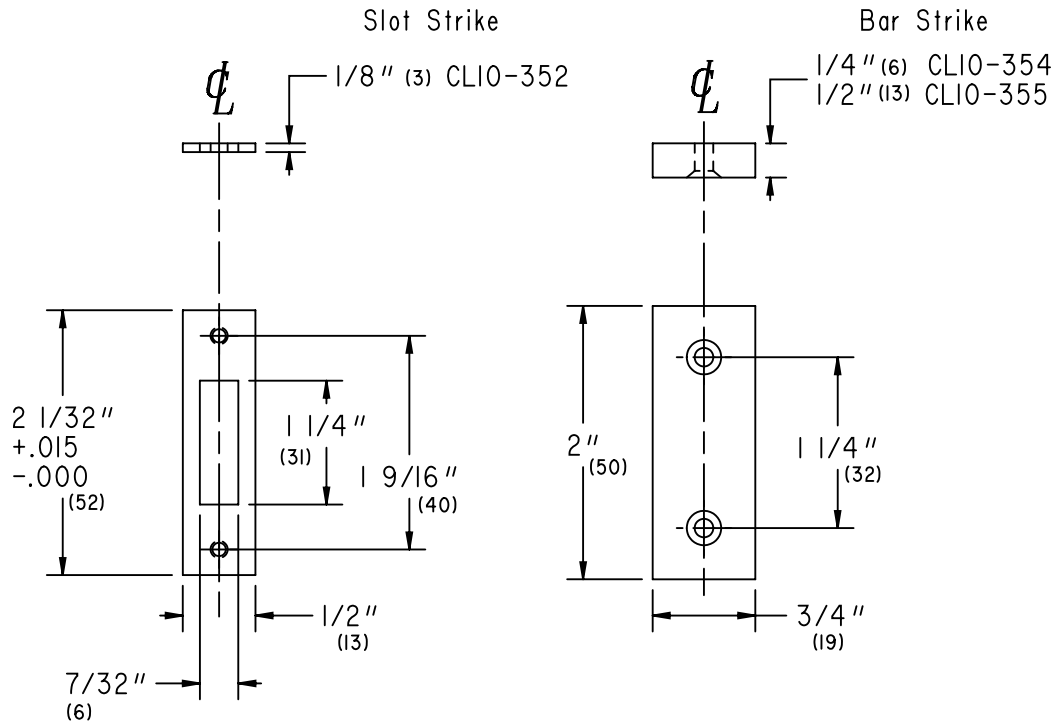


	JOB _____ DATE _____ DOOR THICKNESS _____ REMARKS _____	TEMPLATE NO. <b>CL886</b>
--	---	------------------------------

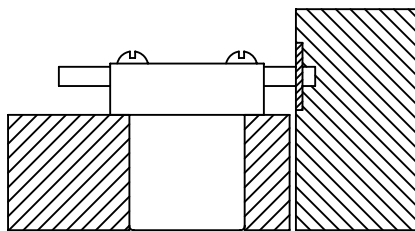
CL10-352  
 CL10-354  
 CL10-355

**Wood or metal jamb**  
 Strikes for CL-Series cabinet and drawer locks  
 Note: Dimensions shown in parenthesis ( ) are in millimeters.

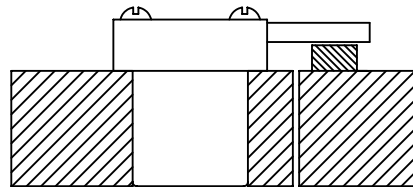
**SCHLAGE®**  
**CL-Series**  
**Strikes**



Mounting Screws  
 Slot and 1/4" bar strike  
 #8-1/2" PFH combination wood/metal  
 1/2" bar strike  
 #8-1 1/4" PFH combination wood/metal



CL10-352 Slot strike  
 Shown surface mounted on wood.  
 Surface mount on metal.



CL10-354 or CL10-355 Bar strike  
 Shown surface mounted on wood.  
 Surface mount on metal.

TEMPLATE NO. <b>CL887</b>	JOB _____	
	DATE _____ DOOR THICKNESS _____	
REMARKS _____		