

**TEMPLATE FOR 500 SERIES
FIRE RATED PANIC EXIT DEVICE
MODELS F-ED501 F-EDS551 F-ED511**

FOR LHR DOOR

IF CYLINDER ONLY IS USED.
DRILL 1 5/16" (33) DIA. HOLE
FROM INSIDE OF DOOR &
1 9/16" (40) DIA. HOLE 1/8" (3.2)
DEEP FROM OUTSIDE OF DOOR

IF EXTERIOR
ACCESS BY
CYLINDRICAL
BALL KNOB LOCK
DRILL 2 1/8" (54)
DIAMETER HOLE

FOLD TOWARD YOU ON
THIS LINE AND PLACE
THIS EDGE AGAINST
FACE OF STOP

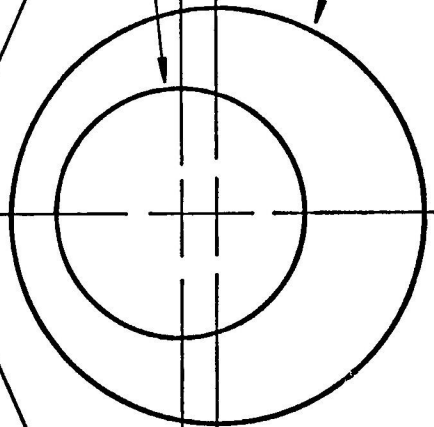
STRIKE
FOR RIM
DEVICE ONLY

LINE UP
WITH C/L
MARKED
ON DOOR

REVIEW INSTALLATION INSTRUCTIONS BEFORE USING THIS TEMPLATE

MOUNTING INSTRUCTION

DRILL TWO HOLES SHOWN TO MOUNT DEVICE TO DOOR FOR
THRU BOLT MOUNTING DRILL LARGE DIAMETER SCREW
HOLES REQUIRED FOR SEX BOLTS.



CYL.
ONLY

FACE OF STOP

FOR 5/8" (16) STOP ONLY

FOR RHR DOOR

**CAUTION:
IMPORTANT TO MOUNT
ACCURATELY ON FIRE
RATED MODELS**

**TEMPLATE FOR 500 SERIES
FIRE RATED PANIC EXIT DEVICE
MODELS F-ED501 F-EDS551 F-ED511**